

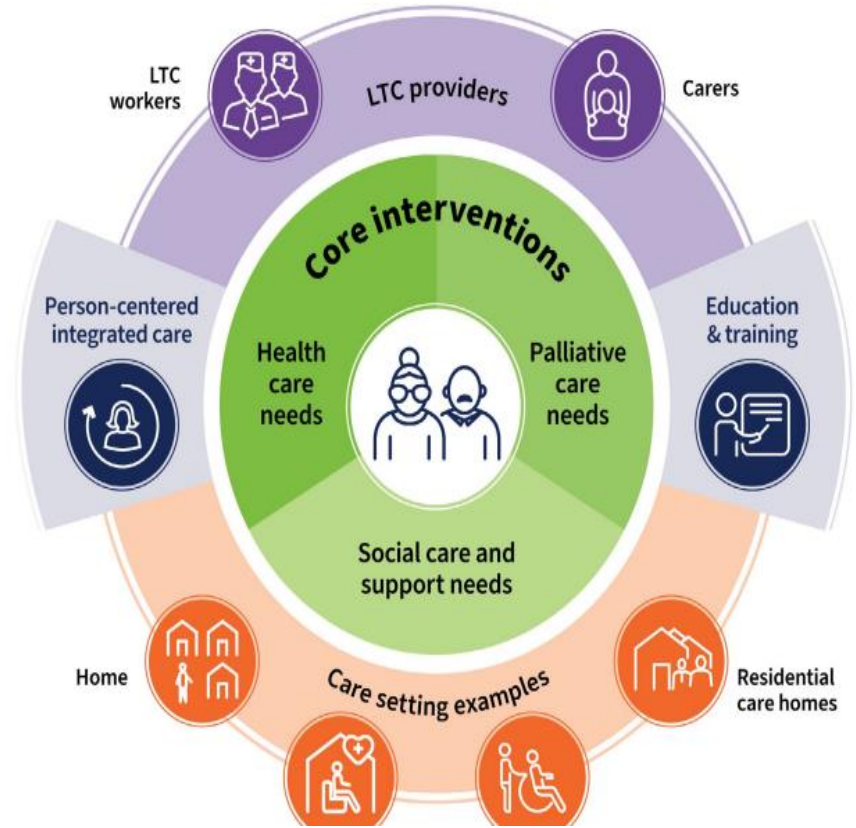
**We need to talk
about
Community-
based care...**

Karla Giacomini, PhD



GOLTC

**GLOBAL
OBSERVATORY
OF LONG-TERM
CARE**





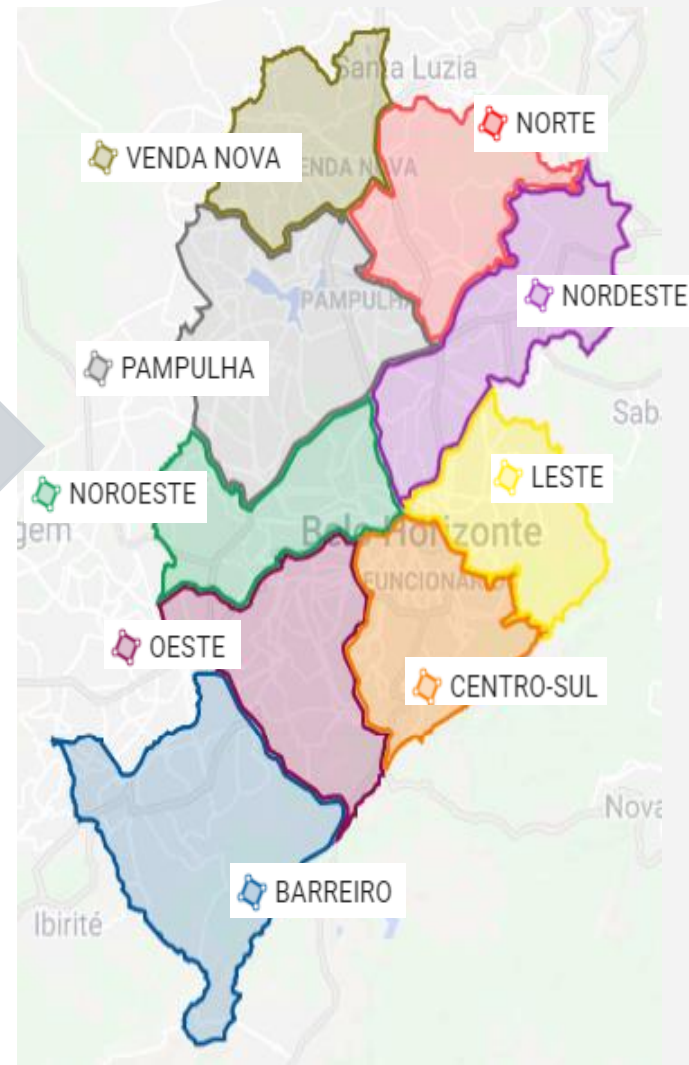
**PREFEITURA
BELO HORIZONTE**



3rd
Brazilian
capital

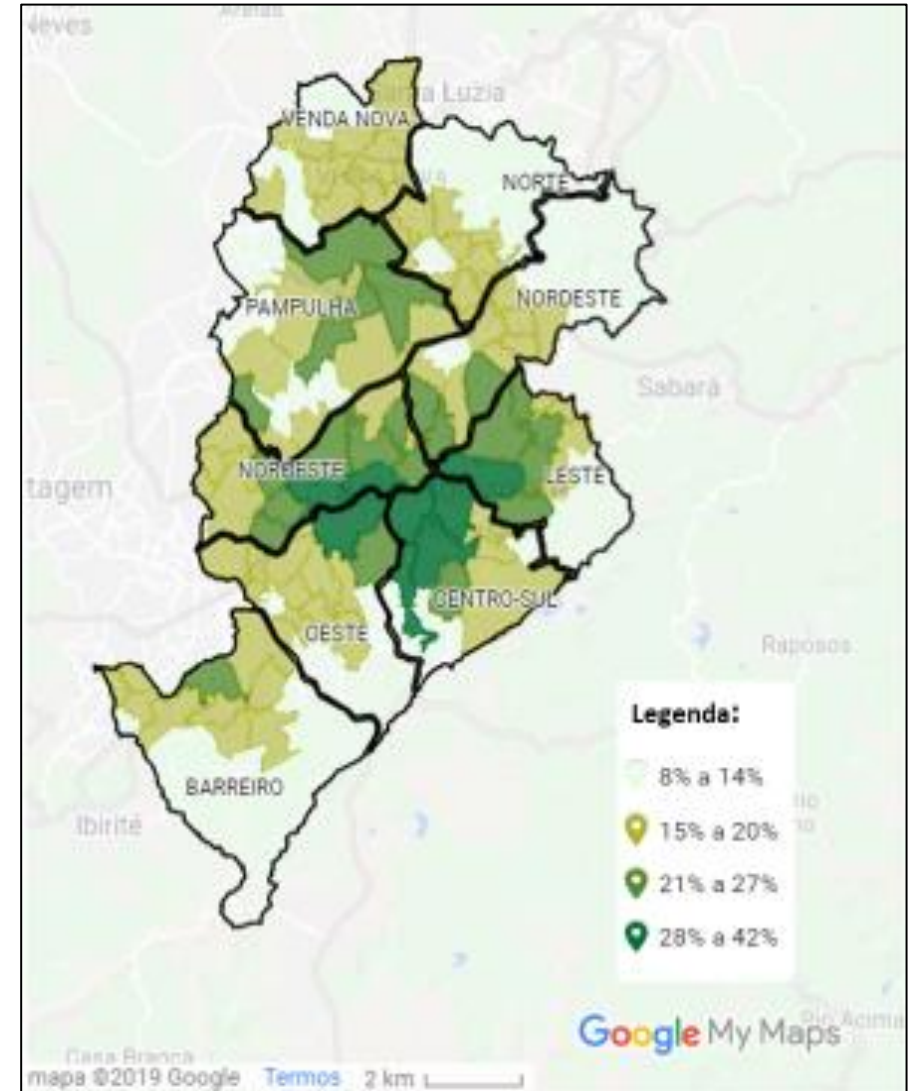
2.5 million
inhabitants.
430,000 older
(60 years and
over)

Human
development
index
HDI = 0.810

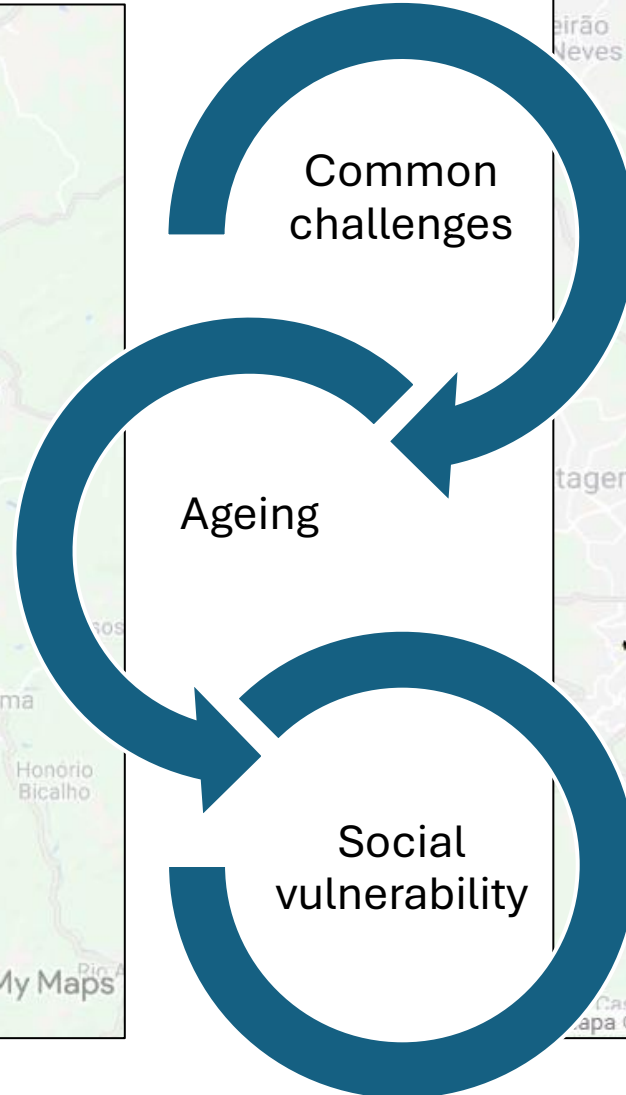
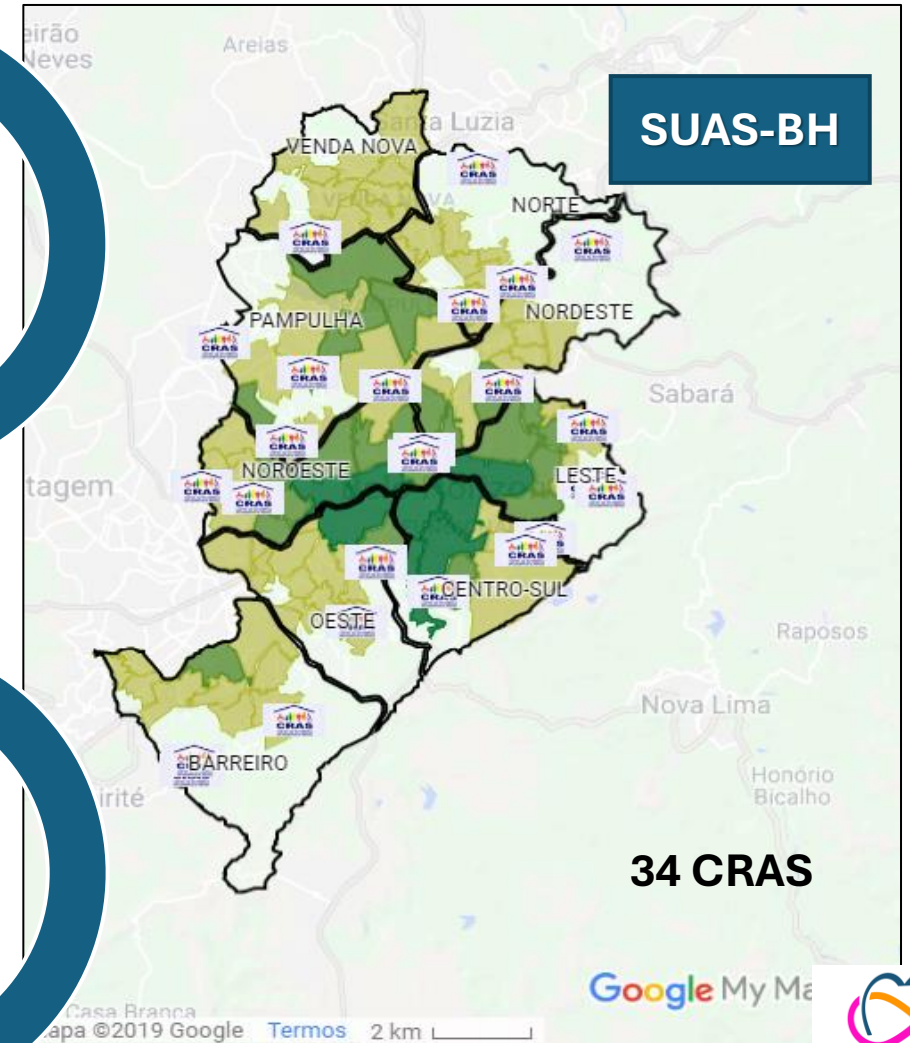
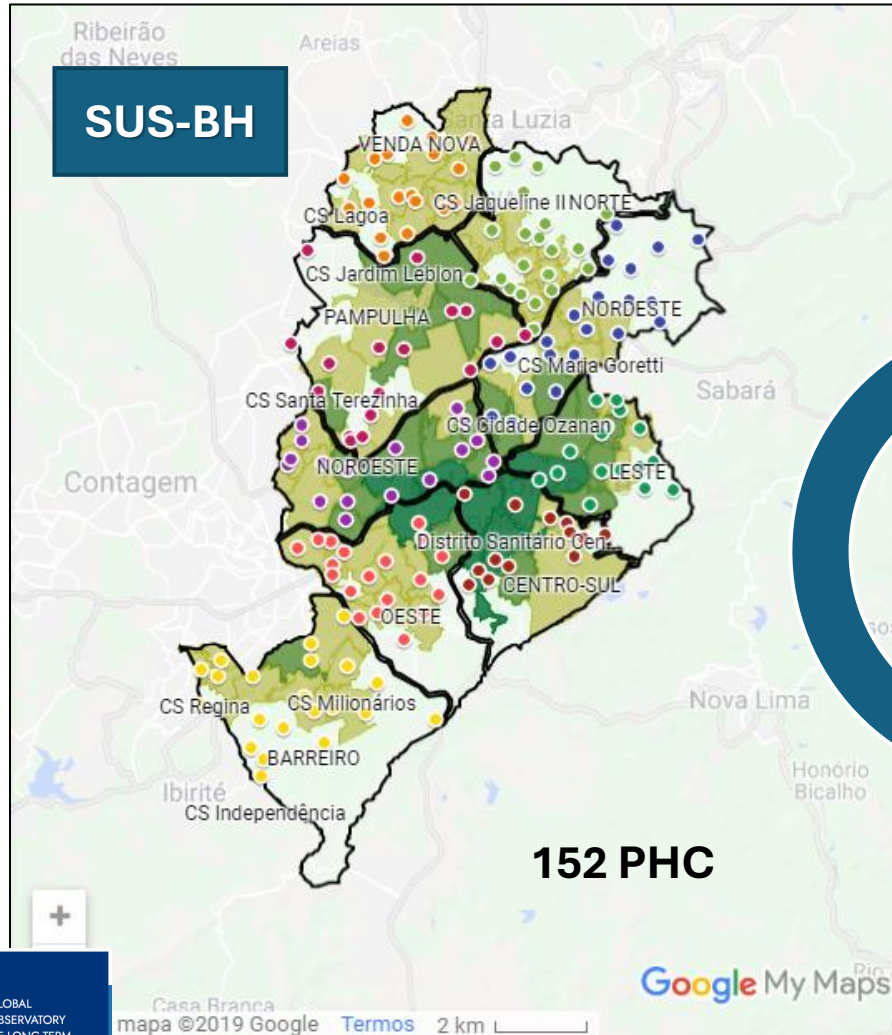


Belo Horizonte - Integrated Care

- Rapidly growing interest in integrated models of care.
- Incipient development of formal long-term care services, focused on residential services, with little integration with health services at the community level.
- Each CRAS offer care for families in a highly vulnerable neighborhood, containing 1 - 4 primary health care centers.



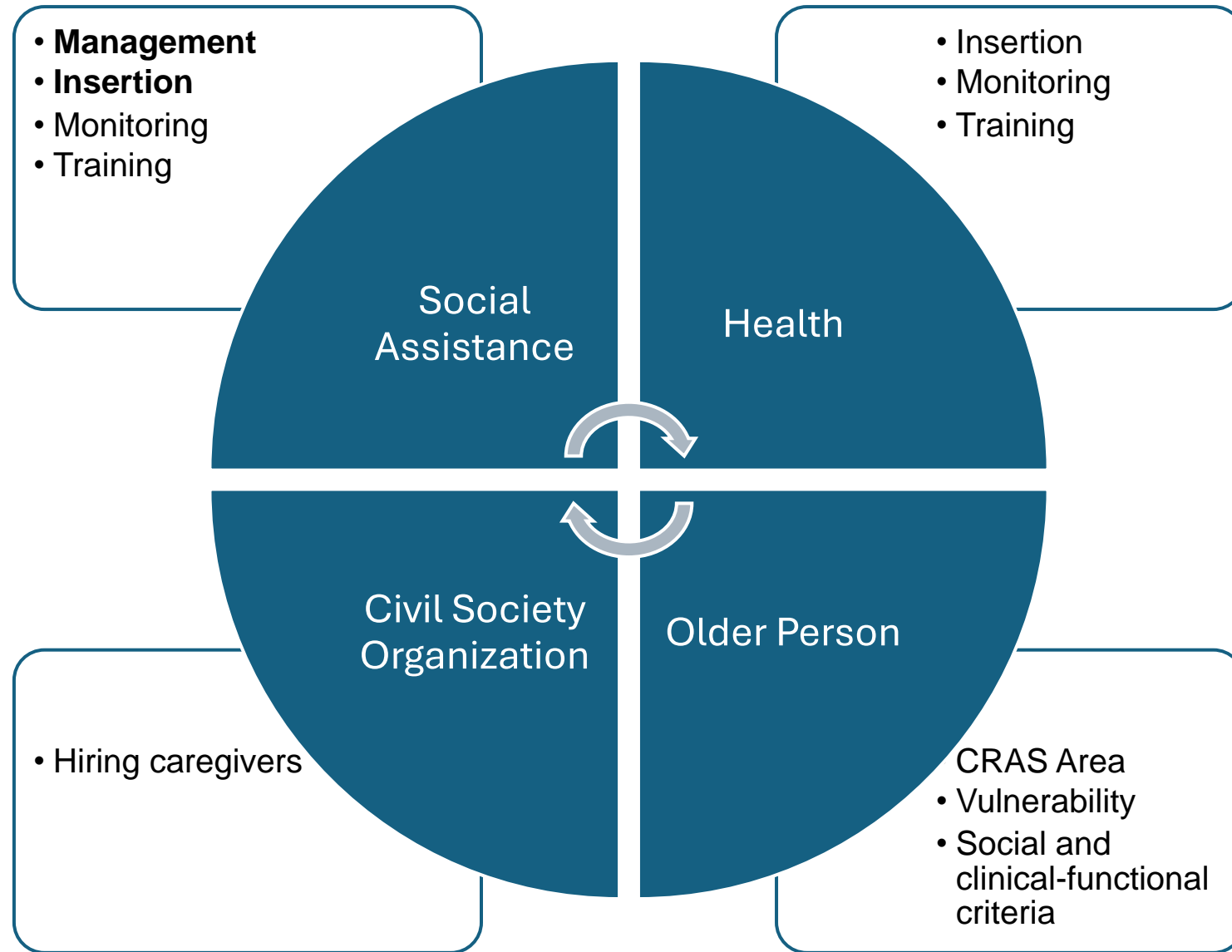
Belo Horizonte National Health and Social Services Systems



Belo Horizonte – Integrated Care: Maior Cuidado Program (PMC)

Program with intersectoral actions aimed at assisting vulnerable, semi-dependent and dependent elderly.

Objective: To prevent situations of risk or social isolation, and to contribute to avoiding/postponing hospitalizations and referrals to LTCFs.



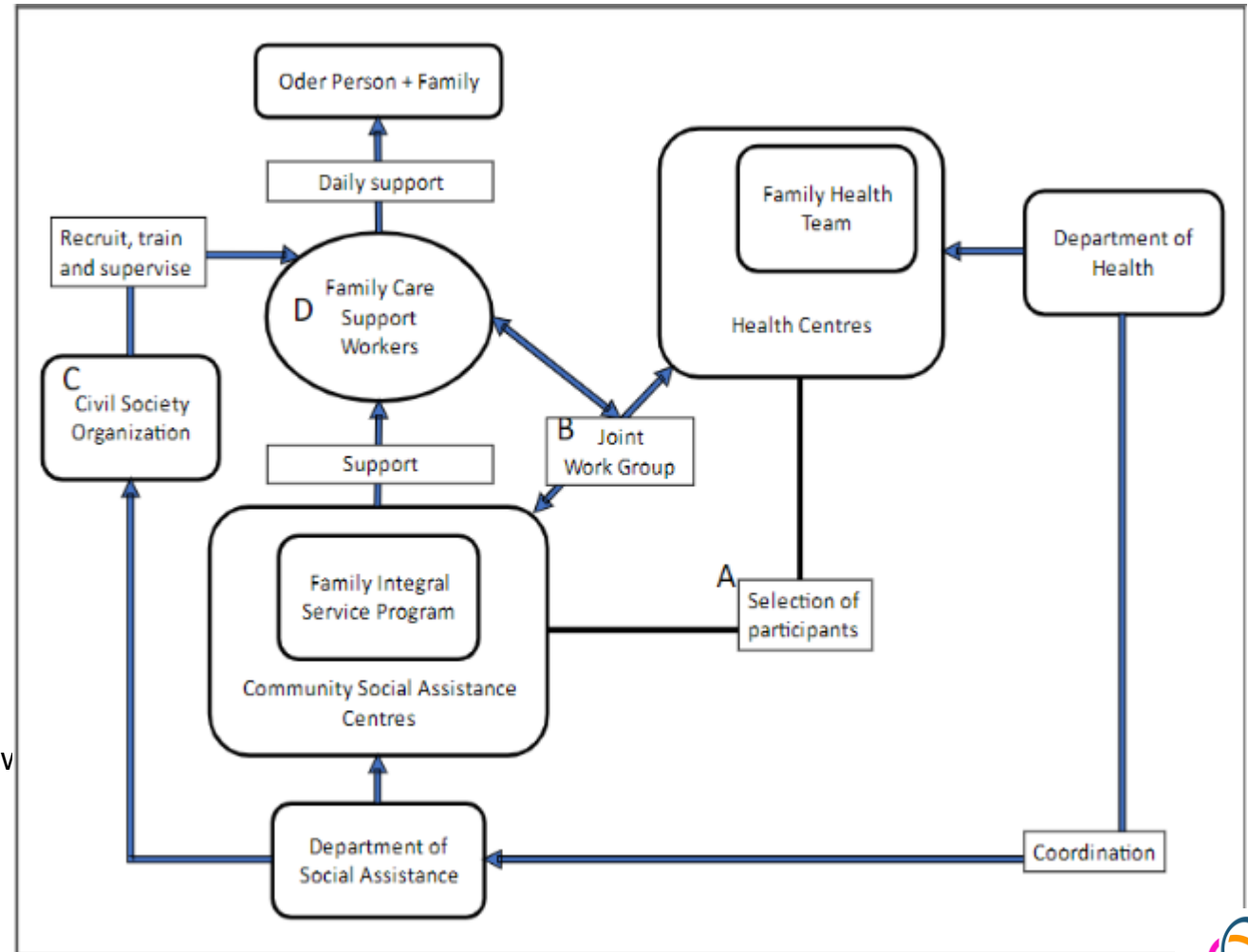
PROGRAMA MAIOR CUIDADO



<https://publications.iadb.org/en/publications/english/view/Programa-Maior-Cuidado-An-Integrated-Community-Based-Intervention-on-Care-for-Older-People.pdf>



PROGRAM CONTEXT



Belo Horizonte – Integrated Care: Maior Cuidado Program (PMC)

- Close coordination between different agencies, including the municipal offices of health and social assistance.
- PMC-trained care workers are paid to spend 2-4 hours a day with target households.
- Household are selected according to the level of care dependency of older members, socioeconomic status and other indicators of family vulnerability.



STAGES OF THE PROGRAM

Identification of the older person

- Dependent or semi-dependent vulnerable elderly living in a CRAS area

Insertion

- Case Discussion
- Filling in the insertion instruments
- Filling out the Care Plan

Accompaniment

- Home visits
- Participation in the WGs

Discharge

- Death
- Improvement of family bonds, organization for family care

PROGRAMA
**MAIOR
CUIDADO**



Belo Horizonte - Integrated Care: Maior Cuidado Program (PMC)

- The PMC approach emphasises collaboration between care workers and family members to meet the older person's care needs, develop the knowledge and capacity of family members to perform this role independently and agree customised care plans.
- PMC care workers conduct regular case reviews in joint meetings of health professionals and social workers.



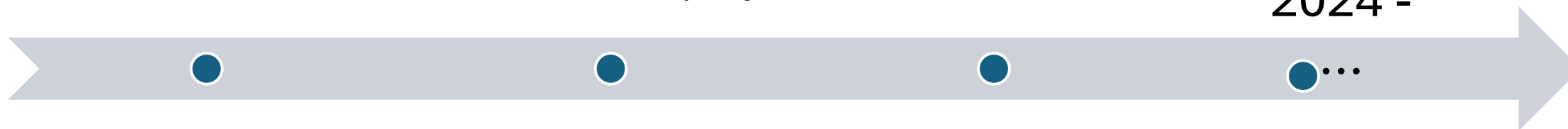
EVALUATION CONTEXT

Implementation
2011



2023 – 2025
Pilot studies

2024 -



Evaluation
2011-2021



PROGRAM EVIDENCE



1

FAMILY CARE

- Improves the quality of care provided by families, reduces caregiver stress, and empowers families to care

2

↑ ACCESS TO CONSULTATIONS

- Being assisted by the PMC was associated with a higher proportion of planned consultations and access to outpatient consultations for rehabilitation purposes

3

↓ INSTITUTIONALIZATION

- Efficient to avoid institutionalization

4

↑ ECONOMY

- Average savings of 34% in hospitalization cost among PMC X non-PMC users

5

↓ HEALTH RESOURCES

- It is associated with a more efficient use of health resources



Final Remarks

- PMC has survived 5 municipal administrations;.
- Typical comments in meetings include:

"We can see the difference PMC makes before and after people are included. It not only prolongs life; it brings older people back to life. " (Nurse, Regional Sales New)

"We have been able to see the results (of PMC) for ourselves." It is really clear, especially how it affects the lives of families. It is so wonderful to see the relief PMC brings when a family carer tells us she now has time to wash her own clothes and do more things for herself. Before she had a PMC caregiver she had no time for anything. This is so gratifying because it shows me that the Program benefits everyone "(Social Worker, Regional West)

REFERENCES



Thank You!



- cuidadosa.org
- kcgiacomini@hotmail.com



Brazilian Care Association
The cycle of care is never ending