

The importance of assessment for Toileting and Containment care

Linda Rönn, Essity



The importance of Toileting and Containment Care

90% of patients
feel
isolated/depressed
due to
incontinence*

Incontinence
increases risk of
IAD**

Reference:

*The 2019 State Of Incontinence Survey Results - National Association For Continence

**Incontinence-Associated Dermatitis in Older Adults: A Critical Review of Risk Factors, Prevention and Management – PMC

So how can we support?

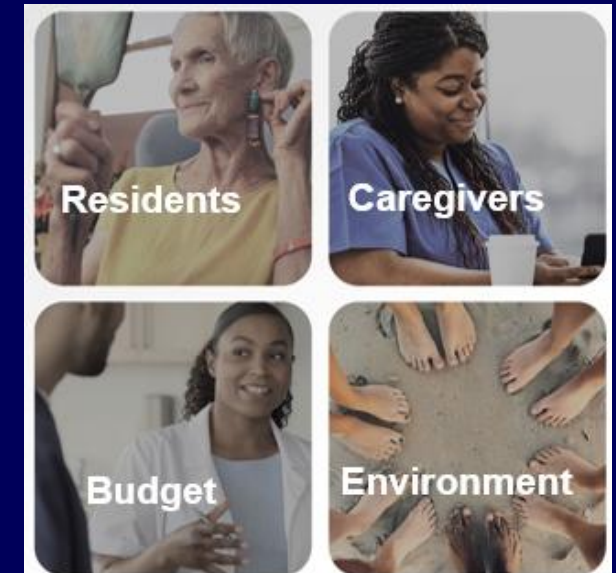
Toileting and Containment Pathway

Ensure person-centred care

TENA products, care pathway optimisation tools, training and support – to help ensure person-centred care.



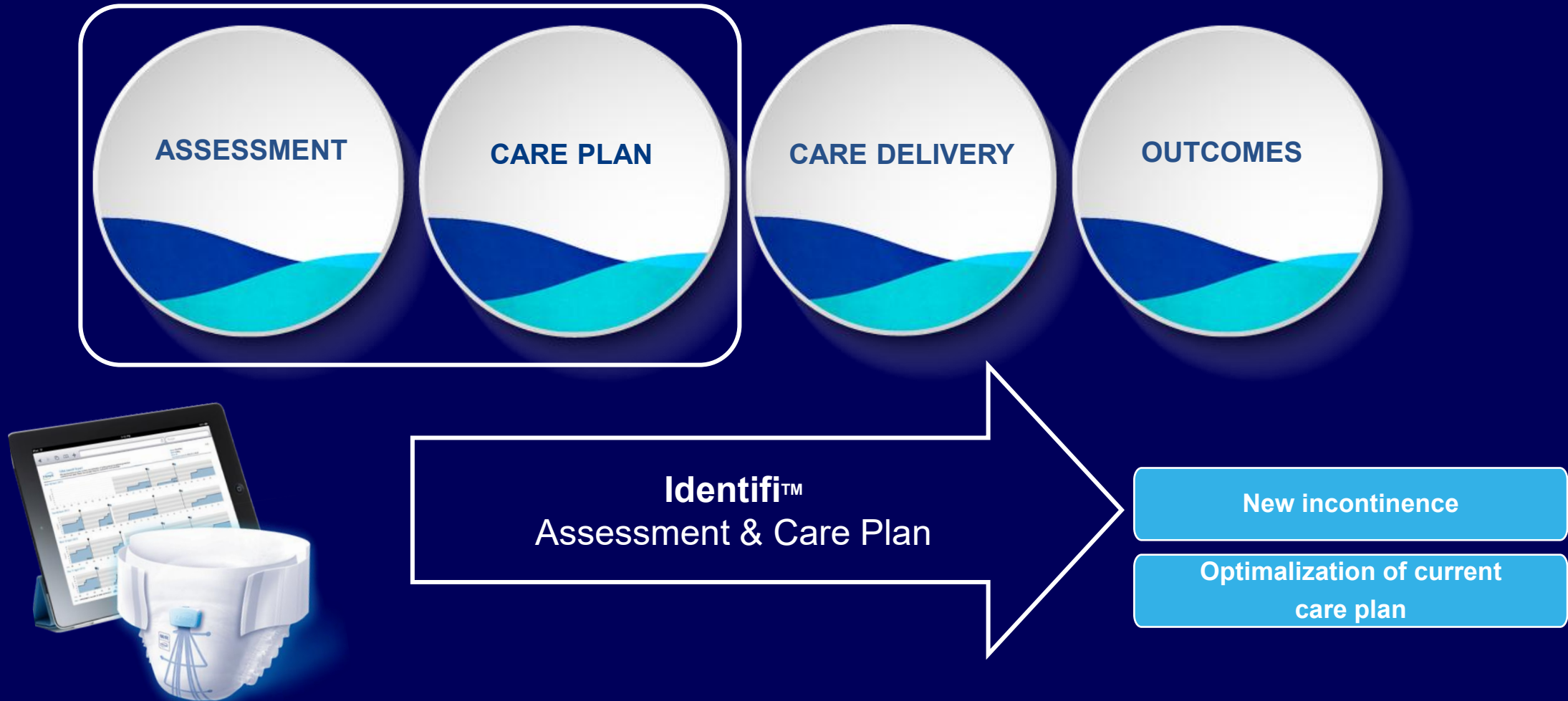
Greater value for:



Using person-centred care to optimise the care pathway is the solution to ensuring the best use of available resources

Toileting & Containment Care Pathway

Optimal care with Digital Health Technology



TENA SmartCare Identifi™

Assessment for individual toileting & containment care plan for care dependent people

The digital solution to
accurate continence
assessment during 72 hours



Provides information to
create person-centred care plan

Creates a detailed voiding
report with voiding
patterns and volumes

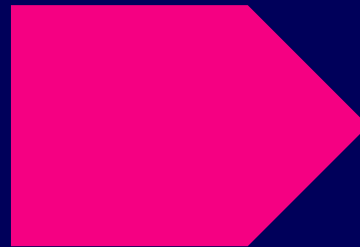


Individualized assessments are key to improve wellbeing and care efficiency

Incontinence is not one-size-fits-all.

Assessment must consider:

- Mobility status
- Cognitive status
- Dexterity
- Dependence of care of others



Holistic assessments allow for:

- Accuracy
- Tailored interventions
- Better outcomes



Benefits of Personalized Toileting & Containment Care

- Improves dignity and quality of life
- Supports independence and better sleep
- Maintains good skin health
- Utilizes caregiver time in the best way possible and reduces product usage
- Reduces waste and Co2 in use

Toileting first!

Advantages of urinating & defecating on the toilet:

- Better quality micturition and defecation
- Less urinary retention, urinary tract infection, obstipation.
- Less use of containment products

The challenge is on time toileting.

If planned and delivered as planned it is better for the person with incontinence, their caregiver and for the environment!



The number of toilet visits have increased somewhat*

But above all they happen at the right times!



Before

2,3



After

2,8

” Quality becomes higher and better through examining the reports compared with weighing the products. Regarding leakage measurement with weighing, I don't know when the leakage comes and then I can't find the right times for toilet assistance.

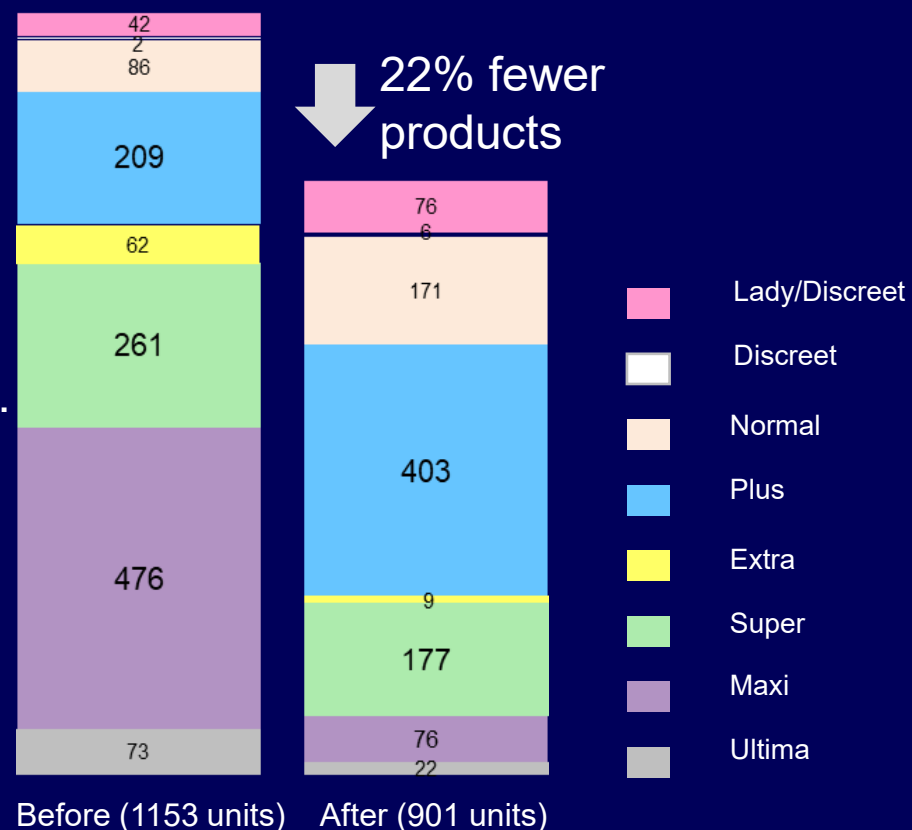
Nurse, Viktoriagården, Kramfors ”

*Number of toilet visits per care recipient per day

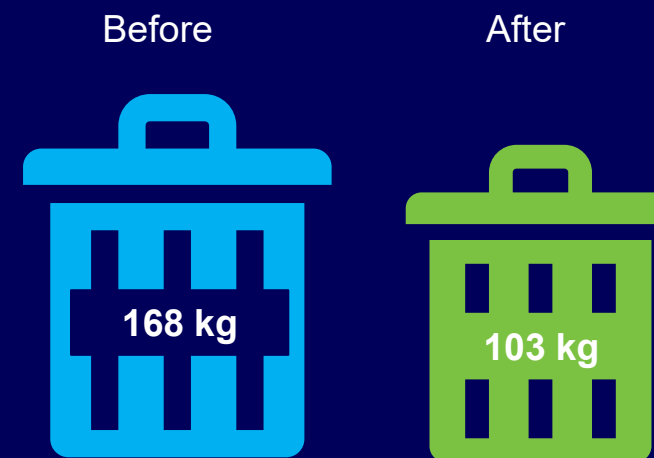
There is a big potential for sustainability gains in everyday care

Reduced use of products

Number of products in 24 hours



Reduced waste by 61 kg per care recipient per year



Increased quality of life with TENA Identifi™



Better suited toilet visits

48%



More customized product choice 81%



Better suited changing times 59%

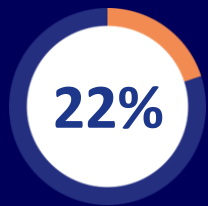
Questionnaire survey of care personnel and quantitative result of before and after measurements with TENA Identifi based on 273 users in 35 operations, 2014 - 2019.



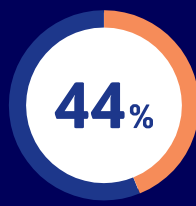
How Digital Health Technology optimizes continence care management

Results of working with TENA Identifi in nursing homes

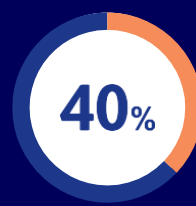
- **Optimizes carer time** due to more targeted continence care delivery and less leakages ¹
- Increases the number of **on time toilet visits** ³
- Helps move patients into less intensive continence care stages ⁴
- Helps deliver **greater quality of life** at reduced cost ⁴
- Helps institutional customers **optimize available resources** ⁴



22% Increase (from 2.3 to 2.8) in toilet visits, improvement in on time toilet visits³



44% reduction in leakages¹



40% of users optimized absorbency¹



15% reduction in CO2 in use²

Take home message

From unplanned to planned Toileting & Containment Care

Innovative Digital Health Technology secures:

- Better timed toilet visits with improved wellbeing
- Less incontinence products and absorption capacity needed



Thank You.