

Examining the economic case for adult social care interventions:

THE ESSENCE (Economics of Social Care Compendium)
CONTINUATION STUDY

Michela Tinelli

**Economics for policy & practice: Showcasing economists in
NIHR ARCs & PRUs, 10th October 2023**

Aims of the ESSENCE toolkit

THE ESSENCE PROJECT



HOME NEWS ABOUT ▾ WHO'S WHO ▾ ESSENCE TOOLKIT CONTACT 🔍 SEARCH

[Economics of Social Care Compendium](#)

ESSENCE

Examining the economic case for a range of adult and children's social care interventions

[NEW: CHILDREN'S SOCIAL CARE EVIDENCE](#)

[ACCESS THE ESSENCE TOOLKIT](#)

[READ CASE STUDIES](#)

[CONTRIBUTE EVIDENCE \(published/underway\)](#)

[GIVE FEEDBACK ON THE ESSENCE TOOLKIT](#)



1. Gather economic evidence for adult *and children's* social care.
2. Make it available in a form that supports decision making.
3. Improve understanding of economic evaluation through training and learning materials.
4. Identify adult social care interventions where new economic evidence might be generated.

www.essenceproject.uk

ESSENCE-2

- **First phase** completed April 2019.
- **New study (ESSENCE-2)** started June 2020 (carry on until March 24).
- **Current team:** Martin Knapp (PI; LSE), Michela Tinelli (LSE), Annette Bauer (LSE), Helen Weatherly (York), Ben Schlaepfer (LSE), Magdalena Walbaum (LSE), Shari Jadoolal (LSE).
- **Aims:** to continue to build on the ESSENCE Toolkit to help decision-makers make better use of resources in three ways:
 - to find economic evidence and make it available and accessible
 - to support capacity-building in adult social care
 - to identify gaps in the evidence base (and maybe fill some of them)
- **Current focus:** adult *and children* social care.

What do we mean by 'economic case'?

- Is an intervention cost-effective and affordable, paying particular attention to the spread of costs and outcomes (across budgets, sectors or systems) and over different time periods?
- We aim to identify
 - direct (immediate or longer-term) savings to various public budgets,
 - savings to other stakeholders (e.g., employers, people using services or families)
 - cost-effectiveness gains where there are no savings as such, but additional costs are seen by decision-makers to be justified by improved outcomes
- Studies reporting purely on the cost of the intervention were not considered.

How does the ESSENCE project work?

- Evidence searches are undertaken across a number of databases (e.g. SSCR projects, NICE guidelines, SCIE, etc).
- Evidence is selected for inclusion through an iterative process with the support of our experts.
- **Three components of the ESSENCE toolkit are available online:**
 1. **Individual case summaries** written in non-technical language;
 2. **Searchable database;**
 3. **Glossary of terms and other useful resources** (training, publications, etc).

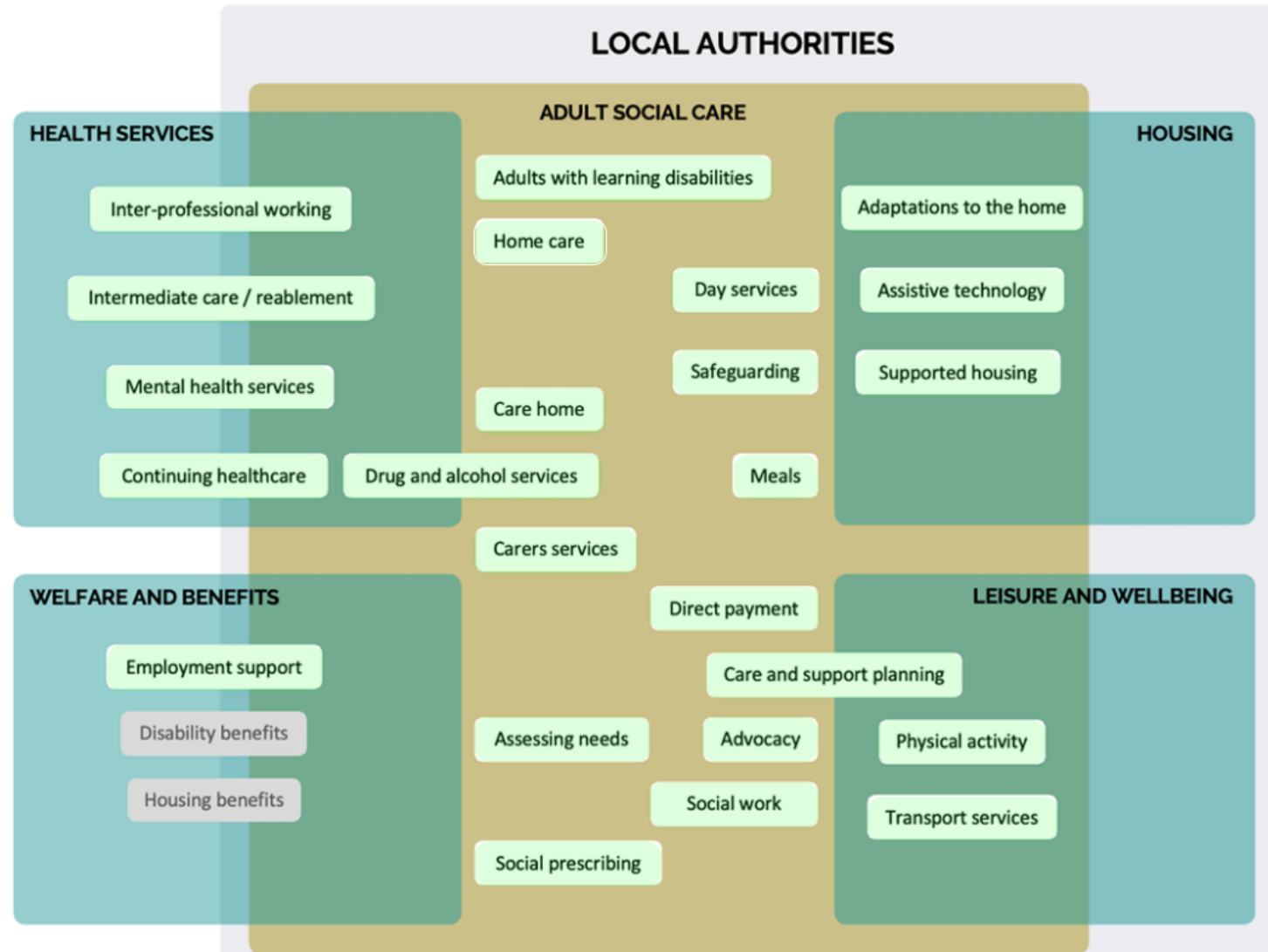
All the work is completed with support from experts, particularly the Advisory Group.

Case summaries

- Planned: 28+

- Already published: 24

So far, we published case summaries on adult social care ...

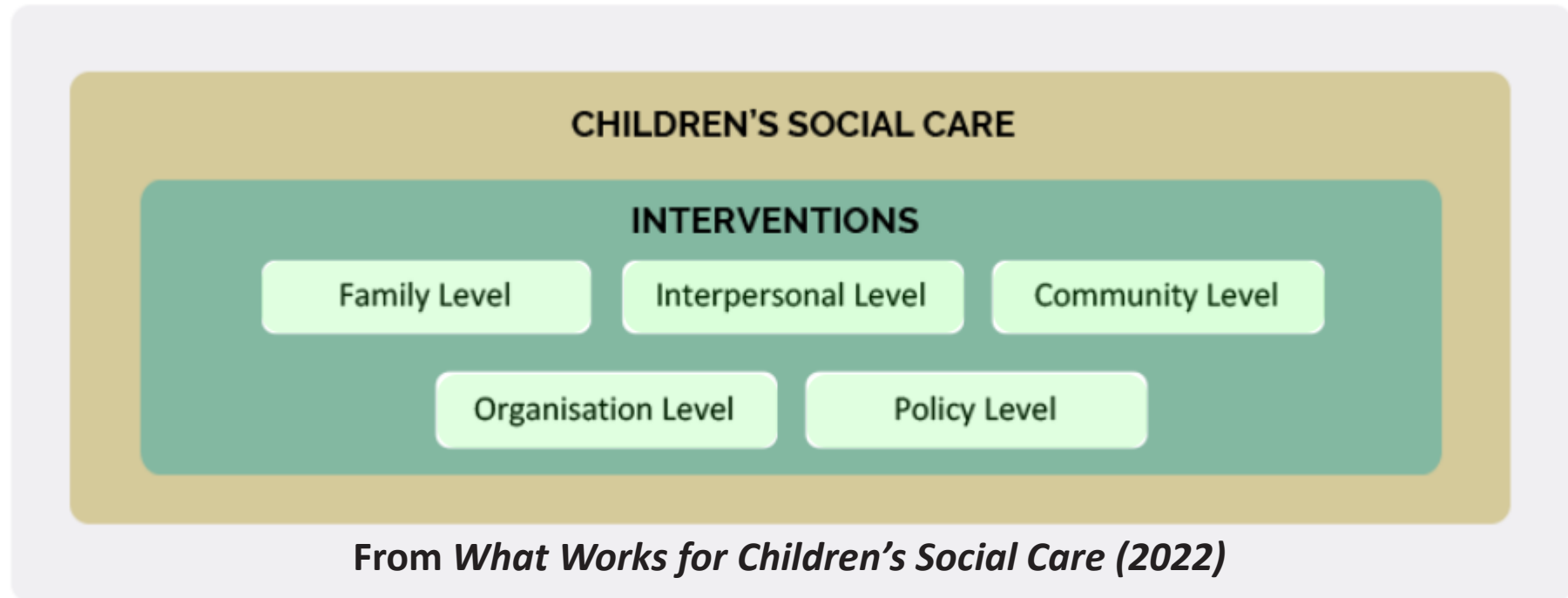


Case summaries

- Planned: 28+

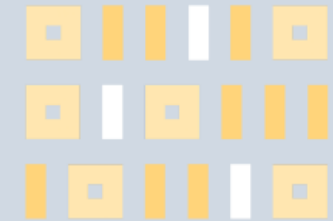
- Already published: 24

So far, we published case summaries on adult social care ...



... But more work is underway on children social care.

ESSENCE TOOLKIT



The toolkit aims to help those planning and shaping services and treatments for adult people with social care needs and their carers make informed decisions about which services and treatments to provide and how much they cost.

The toolkit is available [here](#).

The ESSENCE toolkit has:

[VIEW TOOLKIT](#)

- A collection of case studies covering research findings for some of the main interventions identified with the help of the advisory group
- Information on relevant UK research studies on social care interventions
- Information on the type of evidence (published or forthcoming) across the array of social care interventions and population of interest.

Each case study summary looks at:

[VIEW CASE STUDIES](#)

- Context
- Key points
- Intervention
- Effectiveness
- Cost-effectiveness
- Nature of evidence
- Other information (qualitative experiences; implementation knowledge)
- Key contact(s)

Structure:

- Cover page
- Context
- What is the intervention?
- Is the intervention effective?
- What do people say about it?
- Is the intervention cost-effective?
- What is the quality of evidence?
- How is the intervention implemented?
- Other information
- Contact person
- References

<https://essenceproject.uk/toolkit/>

ESSENCE toolkit: Example of case summary

- Accessible at a glance (5 min reading on the website)
- **If you want to know more** – print and download full case summary (as pdf)
- **Full case summary is also short and written in non-technical language way (accessible as well)**

<https://essenceproject.uk/toolkit/>

THE ESSENCE PROJECT



HOME NEWS ABOUT WHO'S WHO ESSENCE TOOLKIT CONTACT SEARCH

ESSENCE CASE STUDY

Hearing dogs for people with severe and profound hearing loss: economic evidence

Author(s):	Helen Weatherly ² ;
Institution(s):	² Centre for Health Economics, University of York;
Production date:	February 2023
Acknowledgements:	Lucy Stuttard, Francesco Longo, Simon Walker
Share this case study:	Twitter Facebook LinkedIn Email
Print / download PDF:	Print / download PDF

BACKGROUND

In the UK, more than 800,000 people are severely or profoundly deaf, that is 1.32% of the total population.¹ Health and social care workers and care professionals need robust evidence to provide information and advice for people with hearing loss. Hearing loss, particularly when acquired in adulthood, is associated with adverse outcomes across a range of life domains including reduced quality of life, social networks, social inclusion, work, mental and physical health, and cognitive decline.²⁻⁸ Hearing dogs are a type of assistance dog and they may benefit recipients by reducing their reliance on ongoing care as well as supporting independence in the community. This summary reports evidence from Stuttard et al, 2021.⁹

KEY POINTS

CONTENTS

Background
Key Points
Context
What are hearing dogs for people with severe and profound hearing loss?
Are hearing dogs effective?
What do people say about hearing dogs?
Are hearing dogs cost-effective?
What is the quality of evidence on hearing dogs?
How is the intervention implemented?
Other information
Key Contact
References
Back to top

Current state and next steps

The ESSENCE numbers



Bundles of evidence
[comprising (1) + (2)]

26



(1) Case summaries
including those under
production

28+



(2) Searchable database
with individual
publications

1300+

Presentations, conferences, papers 10+

Next steps

- More on capacity building and awareness
- More on strength of the evidence
- Reflect more on the generalisability of the CEA results and settings of studies included (beyond England)
- Identify gaps in the evidence base (and maybe fill some of them)
- Evaluation of the ESSENCE toolkit
- Expand to child social care
- Extension to carry on with the project for longer (beyond March 2024?)
- For the future: maybe continued updating and expansion of the toolkit?

How the ESSENCE toolkit could help you

Search for evidence and map where service provision is supported by economic evidence

- Seek to cover as many social care interventions as possible, and for all groups of people who draw on social care support.
- Quality of evidence ‘broadly’ covered

Identify gaps in evidence to

- Fill in gaps possibly with new research

Disseminate your work

- **Disclaimer:** This presentation draws on independent research funded by the National Institute for Health and Care Research (NIHR) School for Social Care Research. Views expressed are those of the authors and not necessarily those of the NIHR or Department of Health and Social Care.
- **Questions?**



CONTACT THE TEAM!

Michela Tinelli

(m.tinelli@lse.ac.uk)